



MINTEL data



Workflow

1. Shoppers scan barcodes with Mobile app
2. Shoppers pushes data to server
 - Subsamples with valid barcodes are marked to be enhanced with MINTEL data
3. Administrator runs FoodCASE admin
4. Administrators selects barcodes and queries MINTEL data
5. Subsamples are enhanced with data taken form MINTEL db
6. If MINTEL data is different than original data, fields are overridden with MINTEL data

Planned

The screenshot displays the 'TDS subsample detail' window for subsample id 3805. The status is 'Planned'. The current sample is 'Kartoffelsalat [95]' with code 'L1821110016'. The subsample type is 'Food' and it is marked as 'Is Both Standalone Food And Recipe Ingredient'. The 'Buying' tab is active, showing fields for EAN Code, Amount (grams), Amount (items), Price, Sampled by (SP [25]), Pack Size, Primary Package, Secondary Package, Ingredients on Package, and Nutrition on Package. The 'Amount (grams)' and 'Price' fields have red arrows pointing to them. The 'MINTEL query required' checkbox is unchecked. The 'Amount Unit' is set to '(g) gram'. The 'Data quality evaluation' section shows a message: 'FoodEx2 Exposure: should not be empty.'.

File v3.3.0 RC5

File View Tools Reports Help

TDS Foods TDS Samples TDS Subsamples

Subsample Search

TDS Subsample Criteria

Column <all columns>

Function contains

Term

☐ Case sensitive ☐ Ignore time

Search Clear

Subsample Markers

FoodEx2 Codes

Add Single Add Tree

Negation FoodEx2 Code Operator

Remove Search Clear

TDS Subsamples

Id Campaign...

3805 Test Camp... Se

3896 Test Camp... Ei

3898 Test Camp... Ei

Refresh 3 rows

TDS Ingredients

Db Id Ingr. Id

Refresh

TDS subsample detail, subsample id: 3805 / import source id: null

File

Save Save & close Close

TDS Subsample

Subsample id 4005

Current sample Kartoffelsalat [95]

Code L1821110016

Status Planned

Subsample type Food

Is Both Standalone Food And Recipe Ingredient

Planning Deviation Buying Incoming goods Pooling Preparation FoodEx2 Images Remarks Markers

EAN Code

Amount (grams)

Amount (items)

Price

Sampled by SP [25]

Pack Size

Primary Package

Type Material

Secondary Package

Type Material

Ingredients on Package

Nutrition on Package

Data quality evaluation

FoodEx2 Exposure: should not be empty.

MINTEL query required

Amount Unit (g) gram

Currency

Date of Expiry

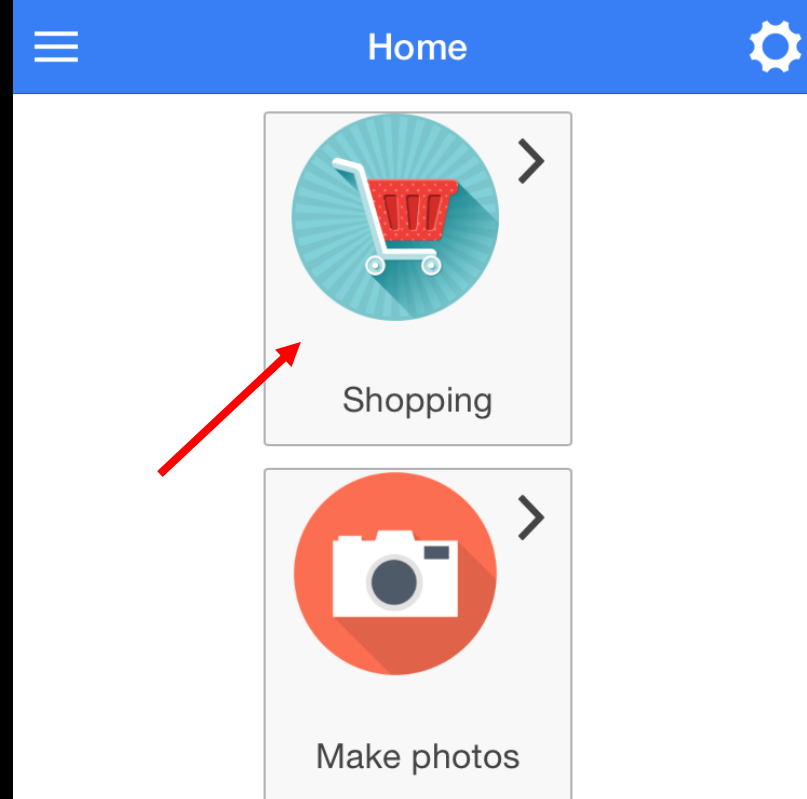
Storage

Print labels...

Open Subsamples

Clear

Shopping





Studies



Browse all possibilities

Choose a date



Studies



Browse all possibilities

BFR pilot



Jakub study





Campaigns



Test Campaign



FirstCampaign





Shops



Edeka





Food items



Shop check in/...



Show deleted

Eier (Größe M) (Hühnerei Vollei geko...



Eier (Größe M) (Hühnerei Vollei geko...



Salat, Kartoffel mit Mayonnaise (Sala...





📍 Shop check in/...

🗑 Show deleted

Eier (Größe M) (Hühnerei Vollei geko...



Eier (Größe M) (Hühnerei Vollei geko...



Salat, Kartoffel mit Mayonnaise (Sala...



You checked in the shop

OK





Salat, Kartoffel mit Mayonnaise (Salat, Kartoffel mit Mayonnaise)

English Salat, Kartoffel mit Mayonnaise
name: (Salat, Kartoffel mit Mayonnaise)

BfR code: L1821110016

Brand:

Producer:

Type:

Husbandry type:

Origin:

Minimum amount [items]:

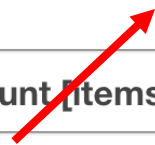
Minimum amount [grams]: 690

EAN code:

Already bought amount [items]:

Already bought amount [grams]:

Comments: Angaben für Kartoffeln





Details



Brand:

Producer:

Type:

Husbandry type:

Origin:

Minimum amount [items]:

Minimum amount [grams]: 690

EAN code:

Already bought amount [items]:

Already bought amount [grams]:

Comments: Angaben für Kartoffeln

Already taken photos: 0



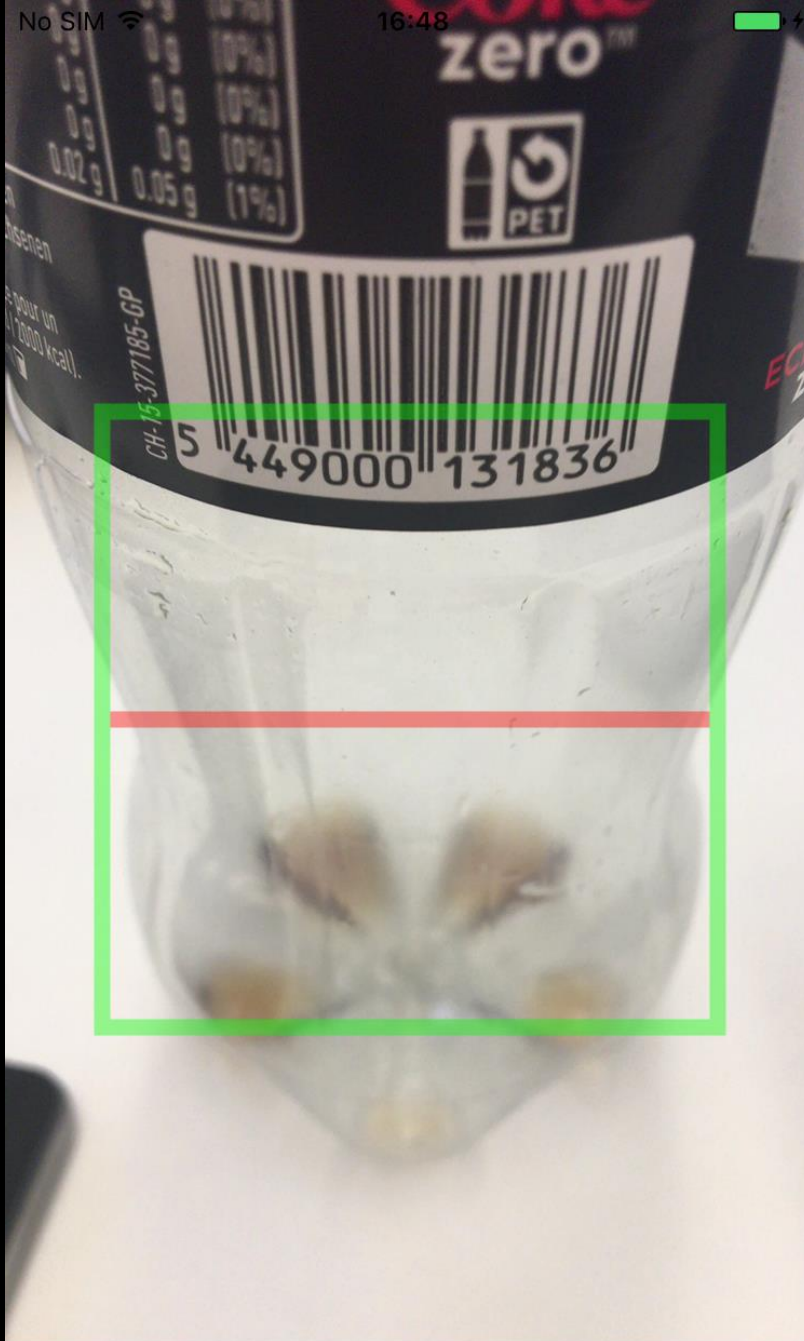
Buy it!



Change it!

Scan Barcode

Capture Photo



Cancel



Details



Brand:

Producer:

Type:

Husbandry type:

Origin:

Barcode successfully scanned

Add barcode 5449000131836 to the item?

Cancel

OK

Already

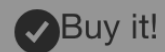
Already bought amount [grams].

Comments:

Angaben für Kartoffeln

Already taken photos:

0



Buy it!



Change it!

Scan Barcode

Capture Photo



Details



Brand:

Producer:

Type:

Husbandry type:

Origin:

Minir

Minimum amount [grams]:

EAN code:

Alrea

Already bought amount [grams].

Comments:

Angaben für Kartoffeln

Already taken photos:

0

Success!

Subsample successfully updated
with the scanned barcode

OK



Buy it!



Change it!

Scan Barcode

Capture Photo



Salat, Kartoffel mit Mayonnaise (Salat, Kartoffel mit Mayonnaise)

English Salat, Kartoffel mit Mayonnaise
name: (Salat, Kartoffel mit Mayonnaise)

BfR code: L1821110016

Brand:

Producer:

Type:

Husbandry type:

Origin:

Minimum amount [items]:

Minimum amount [grams]: 690

EAN code: 5449000131836

Already bought amount [items]:

Already bought amount [grams]:

Comments: Angaben für Kartoffeln

←

☰

Details

⚙

Brand:

Producer:

Type:

Husbandry type:

Origin:

Minimum amount [items]:

Minimum amount [grams]:

EAN code:

Already bought amount [grams]:

Comments:

Already taken photos:

Buying status was successfully updated to Bought

OK

✓ Buy it!

⚠ Change it!

Scan Barcode

Capture Photo

Brand:

Producer:

Type:

Husbandry type:

Origin:

Minimum amount [items]:

Minimum amount [grams]: 690

EAN code: 5449999131836

Already

Already bought amount [grams]:

Comments: Angaben für Kartoffeln

Already taken photos: 0

Buying status was successfully updated to Bought

OK

✓ Buy it!

⚠ Change it!

Scan Barcode

Capture Photo



Food items



Shop check in/...



Show deleted

Eier (Größe M) (Hühnerei Vollei geko...



Eier (Größe M) (Hühnerei Vollei geko...



Salat, Kartoffel mit Mayonnaise (Sala...



Navigation

Home

Get data from server

Push data to server



 Shop ch

Eier (Größe

Eier (Größe

Salat, Kart



📍 Shop check in/...

🗑 Show deleted

Eier (Größe M) (Hühnerei Vollei geko...



Eier (Größe M) (Hühnerei Vollei geko...



Salat, Kartoffel mit Mayonnaise (Sala...



Wi-Fi connection exist

Everything will be synchronised
now.

Cancel

OK



Bought

TDS subsample detail, subsample id: 3805 / import source id: null

File

Save Save & close Close

TDS Subsample

Subsample id 4005

Current sample Kartoffelsalat [95]

Code L1821110016

Status Bought

Subsample type Food

Is Both Standalone Food And Recipe Ingredient ☒

Planning Deviation **Buying** Incoming goods Pooling Preparation FoodEx2 Images Remarks Markers

EAN Code 5449000131836 MINTEL query required ☒

Amount (grams) Amount Unit (g) gram

Amount (items)

Price Currency

Sampled by SP [25] Date of Expiry

Pack Size Storage

Primary Package

Type Material

Secondary Package

Type Material

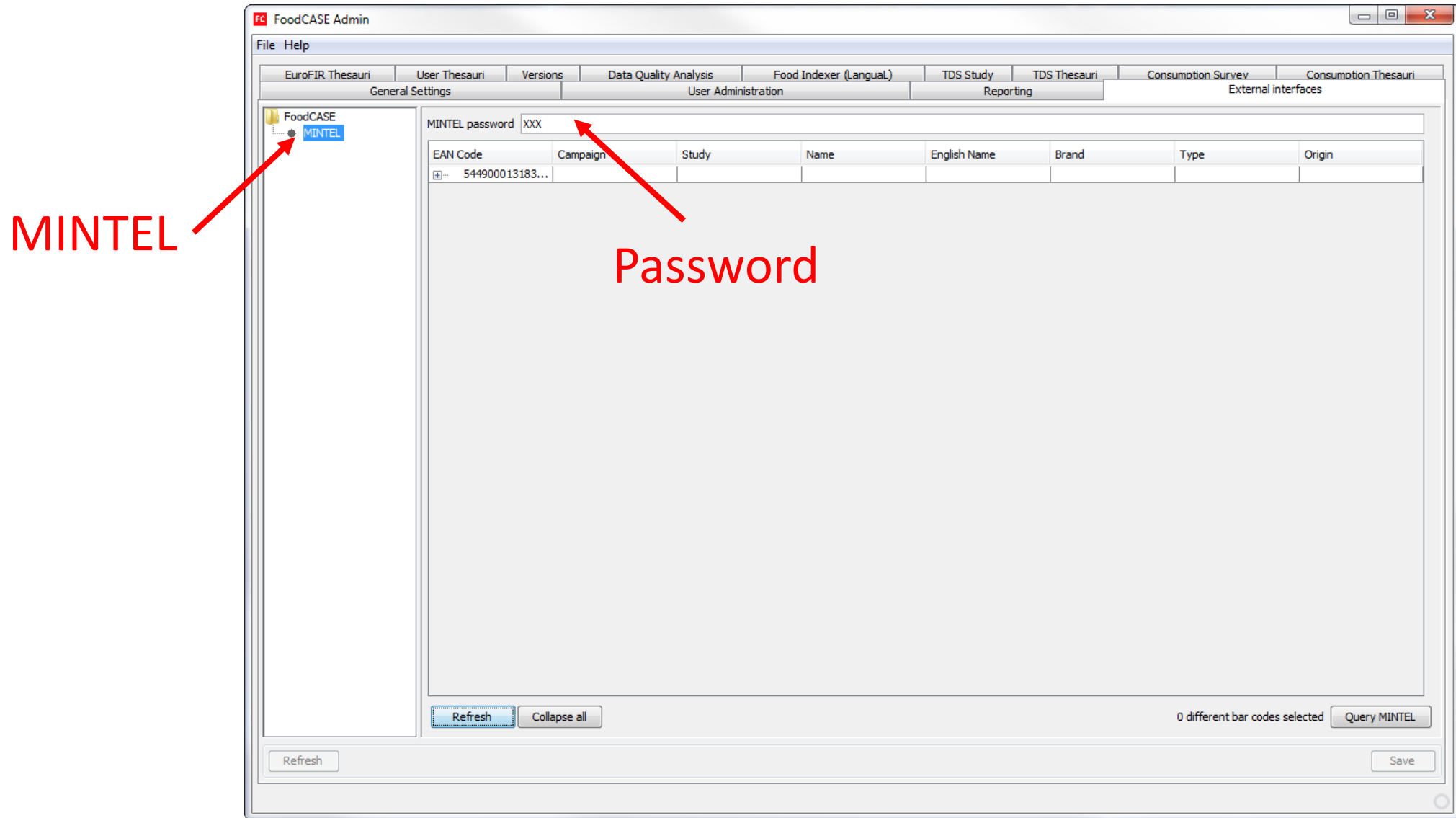
Ingredients on Package

Nutrition on Package

Data quality evaluation

FoodEx2 Exposure: should not be empty.

Administrator's task



FoodCASE Admin

File Help

EuroFIR Thesauri User Thesauri Versions Data Quality Analysis Food Indexer (LanguagL) TDS Study TDS Thesauri Consumption Survey Consumption Thesauri

General Settings User Administration Reporting External interfaces

FoodCASE

MINTEL

MINTEL password XXX

EAN Code	Campaign	Study	Name	English Name	Brand	Type	Origin
544900013183...	Test Campaign	BFR pilot [id=2]	Salat, Kartoffel mit Ma...	Salat, Kartoffel mit Ma...			

Select barcodes

- Tree view
- Several subsamples have the same barcode
- Each code queried just once

Refresh Collapse all

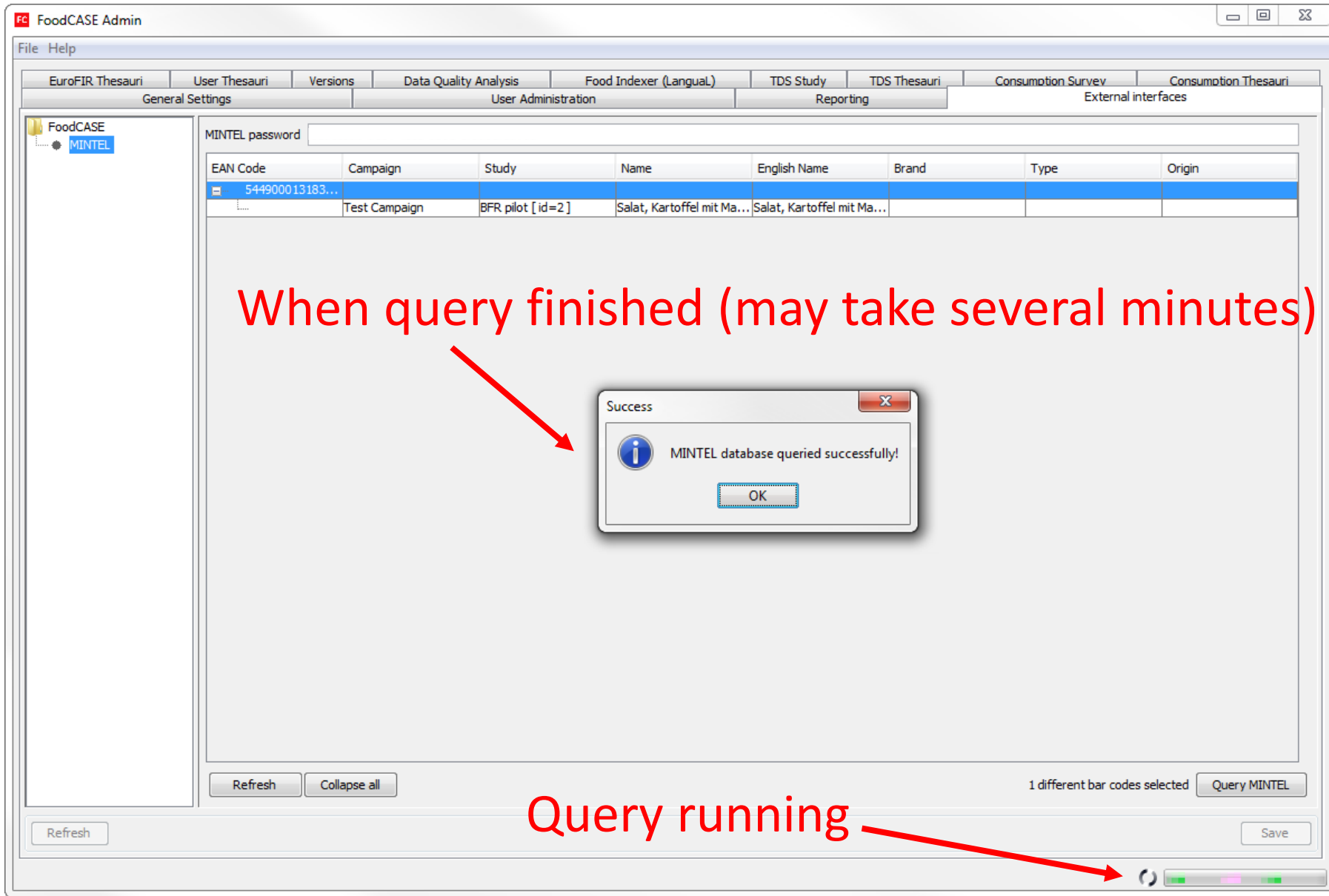
1 different bar codes selected

Query MINTEL

Save

Refresh

Run MINTEL querying



Data enhanced with MINTEL

TDS subsample detail, subsample id: 3805 / import source id: null

File

Save Save & close Close

TDS Subsample

Subsample id 4005

Current sample Kartoffelsalat [95]

Code L1821110016

Status Bought

Subsample type Food

Is Both Standalone Food And Recipe Ingredient ☒

Planning Deviation Buying Incoming goods Pooling Preparation FoodEx2 Images Remarks Markers

Name Salat, Kartoffel mit Mayonnaise (Salat, English Name Salat, Kartoffel mit Mayonnaise (Salat,

Generic name Brand Coca-Cola Zero

Country of Origin Producer Coca-Cola

Type Campaign Test Campaign

Sampling Place Edeka Sampling Region

Sampling Date Oct 6, 2016

Alternative Place

Minimum Items

Minimum Amount 690

Husbandry Type

Second Best Procedure Andere EK-Stätte aufsuchen (keine Vorgabe)

Data quality evaluation

FoodEx2 Exposure: should not be empty.

TDS subsample detail, subsample id: 3805 / import source id: null

File

Save Save & close Close

TDS Subsample

Subsample id 4005

Current sample Kartoffelsalat [95]

Code L1821110016

Status Bought

Subsample type Food

Is Both Standalone Food And Recipe Ingredient ☒

Planning Deviation Buying Incoming goods Pooling Preparation FoodEx2 Images Remarks Markers

EAN Code 5449000131836 MINTEL query required ☐

Amount (grams) Amount Unit (g) gram

Amount (items)

Price Currency

Sampled by SP [25] Date of Expiry

Pack Size 0.50litre Storage Shelf stable

Primary Package

Type Bottle Material Plastic PET

Secondary Package

Type Material

Ingredients on Package Water, carbonic acid, colouring: sugar colour; sweetener: cyclar

Nutrition on Package Per 100ml: energy 1kJ/0.2kcal, 0g protein, 0g carbohydrates, 0g

Data quality evaluation

FoodEx2 Exposure: should not be empty.

TDS subsample detail, subsample id: 3805 / import source id: null

File

Save Save & close Close

TDS Subsample

Subsample id 4005

Current sample Kartoffelsalat [95]

Code L1821110016

Status Bought

Subsample type Food

Is Both Standalone Food And Recipe Ingredient

Planning Deviation Buying Incoming goods Pooling Preparation FoodEx2 Images Remarks Markers

Angaben für Kartoffeln

Description: Coca-Cola Zero Sugar Free Carbonated Soft Drink contains only one calorie. This product nevertheless keeps the authentic Coca-Cola flavour and retails in a 0.5l bottle, and in a can.

Data quality evaluation

FoodEx2 Exposure: should not be empty.